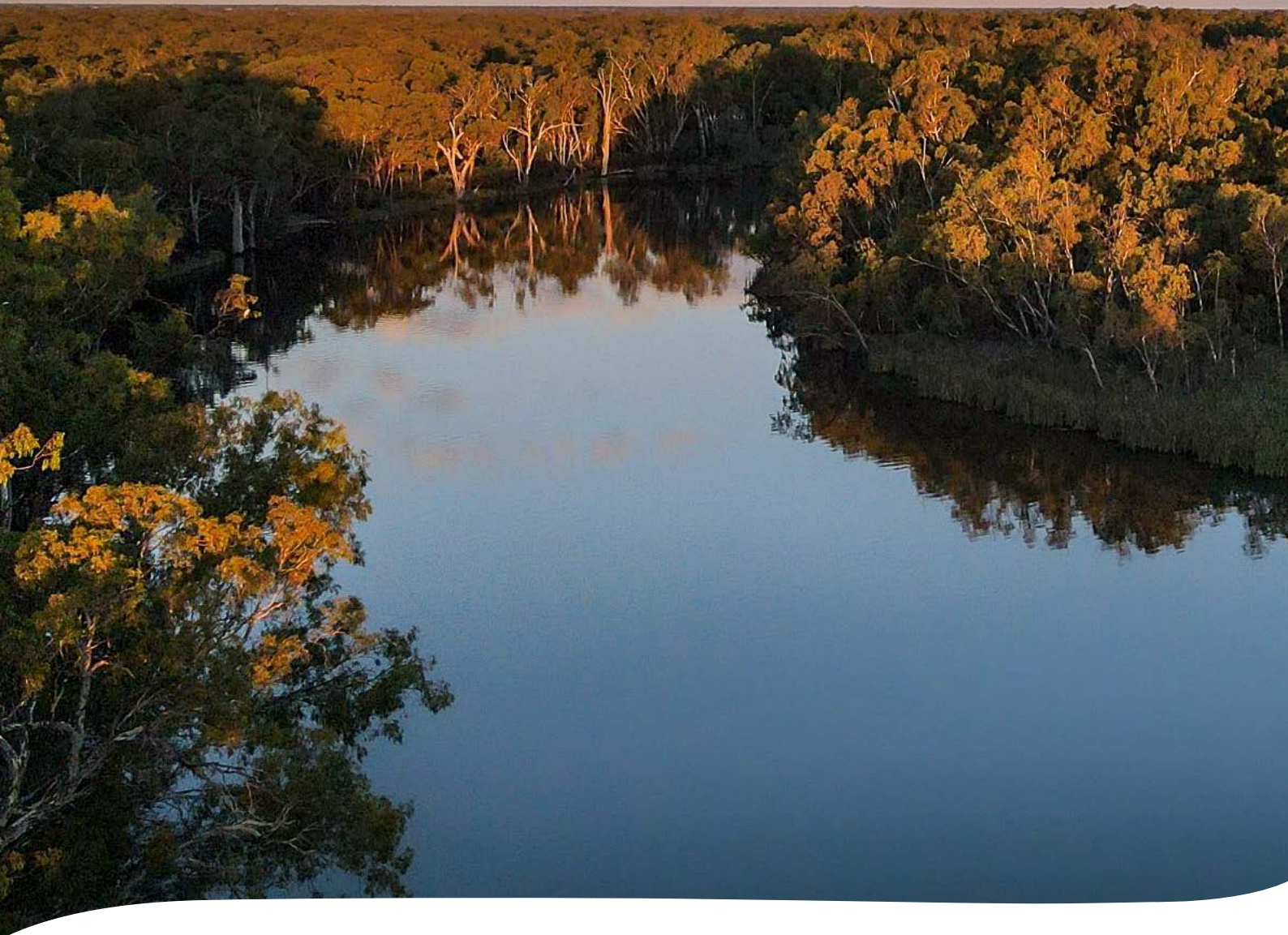




PS AUSTRALIAN STAR

AUSTRALIA'S FIRST
LUXURY RIVER CRUISING



Experience the ultimate and unparalleled in

RIVER CRUISING

aboard the PS Australian Star

2025 | 2026

CONTENTS

| | |
|--|-------|
| Introducing PS Australian Star | 3 |
| Cruising - That's All About You | 4 |
| Hopwood Lounge and Bar | 5 |
| Your River Stateroom | 6 |
| Deck Plans | 7 |
| A Taste of Australia - Randell Dining Room | 8-9 |
| Sightseeing - The All Inclusive Local Experience | 10-11 |
| 3 Night Discovery | 12-13 |
| 4 Night Explorer | 14-15 |
| 7 Night All the Rivers Run | 16-17 |
| Special Offers | 18 |
| Extend Your Stay | 19 |



INTRODUCING PS AUSTRALIAN STAR



Embark on a journey into a new era of river cruising with the PS Australian Star—a vessel that not only bears a name steeped in heritage and pride but also represents the pinnacle of luxury on the iconic Murray River.

Scheduled for a grand launch in Spring 2025, the PS Australian Star will redefine river cruising, offering year-round, all-inclusive, overnight experiences with 3, 4, and 7-night itineraries along the majestic Murray River, commencing from the charming town of Echuca in Victoria. PS Australian Star promises a voyage that seamlessly blends tradition with opulence. As you step onto the decks of the PS Australian Star, you enter a realm where every detail tells a tale of the river's rich heritage and the golden age of paddle steamers. The vessel itself is a masterpiece, a floating testament to the artistry and engineering that defined an era.

Immerse yourself in the symphony of steam from the authentic 1907 wood-fired steam engine and the rhythmic churning of the paddlewheel as we embark on a leisurely voyage along the winding waters of the Murray River. Named in honour of Australia's celestial Southern Cross, the Australian Star invites you to explore its opulent interiors, where each Suite and Stateroom exudes an air of refinement. From the Hopwood Lounge & Bar, celebrating the entrepreneurial spirit of Echuca's founder, to the Randell Dining Room, paying homage to the pioneering journey of William Randell, every space aboard is a chapter in a captivating narrative that unfolds with every river bend.

Boasting 19 plush and modern Staterooms and Suites, each opening to a deck and featuring an ensuite, air-conditioning, complimentary Wi-Fi, luxury linen, and a TV entertainment system, the Australian Star ensures a luxurious retreat for every traveller. Moreover, its ever-changing river views provide a constant reminder of the beauty that surrounds. As the PS Australian Star prepares to grace the waters, it beckons you to join a voyage where tradition meets modernity, and luxury becomes an art form. Welcome aboard the PS Australian Star, where history and luxury converge for an unforgettable river experience.

CRUISING THAT'S ALL ABOUT YOU

At Murray River Paddlesteamers, we are committed to providing a seamless and unforgettable cruising experience. That's why we include almost everything you need for a comfortable and enjoyable journey—so you can simply relax, knowing everything is taken care of.

We also understand that some guests prefer a child-free environment to unwind, which is why our cruises are exclusively designed for adults. You'll be cruising with like-minded travellers who share your appreciation for relaxation, exploration, and refined experiences.

From elegant accommodations and exquisite cuisine to breathtaking scenery and exceptional service, we take pride in every detail. Our friendly and knowledgeable crew is always on hand to ensure your time on board is as stress-free and enjoyable as possible.

So, sit back, relax, and let us take care of everything. Your Murray River cruise will be an experience to treasure for years to come.

YOUR COMPREHENSIVE INCLUSIONS:



All Meals Including Onshore Tours

Morning and Afternoon Tea

Selected Wines & Beer with dinner service

Complimentary Barista Coffee, Fine Teas,
Soft Drink and Water

Return V/Line Train from Melbourne to Echuca

Return Echuca Station Transfers

Complimentary Echuca coach transfers to/from
PS Australian Star from partner hotel

Premium Onshore Guide Tours

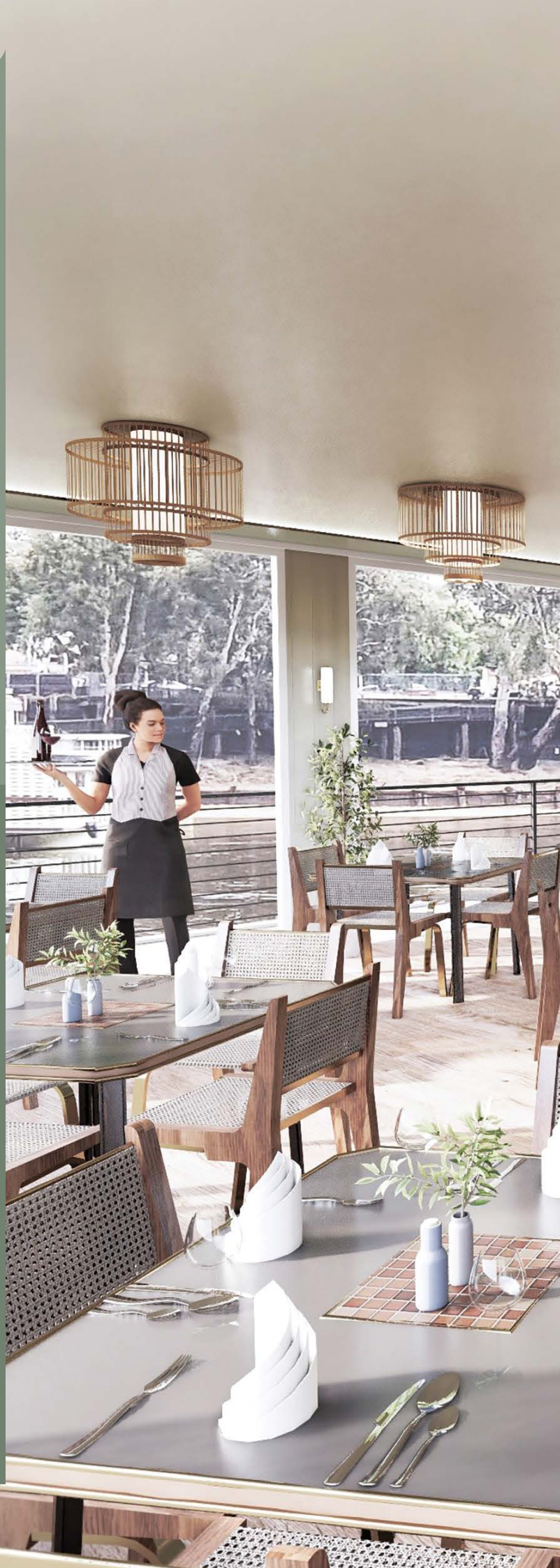
Award winning service

Riverside Dining & Campfires with entertainment

Stateroom TV Entertainment System

Complimentary Wi-Fi

All onboard Gratuities





HOPWOOD LOUNGE AND BAR

Immerse yourself in the elegant charm of the Hopwood Lounge and Bar, named after the visionary founder of Echuca, Henry Hopwood.

This inviting space offers cozy seating, exuding a warm ambience that beckons guests to unwind and indulge in delightful conversations. The lounge is adorned with subtle nods to the rich history of the Murray River region, creating an atmosphere that is both nostalgic and welcoming.

As you settle into the plush seating, let the rhythmic sounds of the river outside serenade you while you sip on expertly crafted cocktails and beverages. Our skilled bartenders are ready to craft your favourite drink or introduce you to a new signature creation inspired by the beauty of the Murray River.

For those seeking a breath of fresh air, the Henry Hopwood Lounge and Bar seamlessly opens onto the front deck, where comfortable outdoor recliners await. Relax under the open sky, bask in the gentle breeze, and savour your drink as you take in the panoramic views of the riverbanks passing by.

Whether you're mingling with fellow travellers, enjoying a quiet moment alone, or simply soaking in the unparalleled scenery, the Henry Hopwood Lounge and Bar promises an unforgettable experience aboard the PS Australian Star.

YOUR RIVER STATEROOM

Embark on a luxurious river cruising experience aboard the PS Australian Star, featuring our contemporary and sophisticated River Staterooms. Immerse yourself in the serenity of the surroundings and captivating river views, all enjoyed from the opulence of your private accommodation.

Choose from our 19 River Staterooms and Suites, each presenting a variety of styles, from the lavish King and Queen Suites to the spacious Queen Staterooms, where the queen bed can be transformed into two single beds. Every room opens onto a deck, with the King & Queen Suites boasting their own private deck area. Entertainment is at your fingertips with a TV system in each room.

Ensure a comfortable journey with individually controlled air-conditioning in every room, and stay seamlessly connected with complimentary WIFI available throughout the vessel, including all rooms.

The PS Australian Star boasts outstanding facilities and amenities, featuring a passenger lift for convenient access to all accommodations. Unwind in the Hopwood Lounge and outdoor seating area, offering panoramic views of the ever-changing scenery. Indulge in delectable, locally sourced cuisine at the Randell dining restaurant, with a fresh menu presented daily.





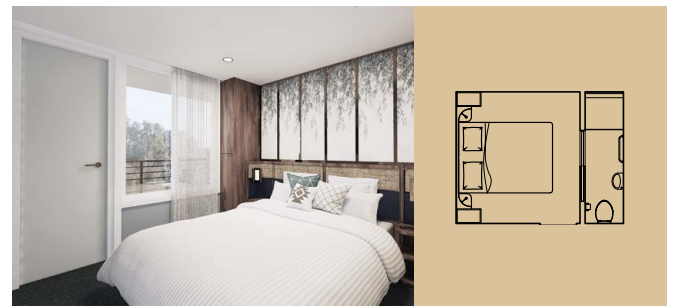
KING SUITE 18.6 M² | With private deck



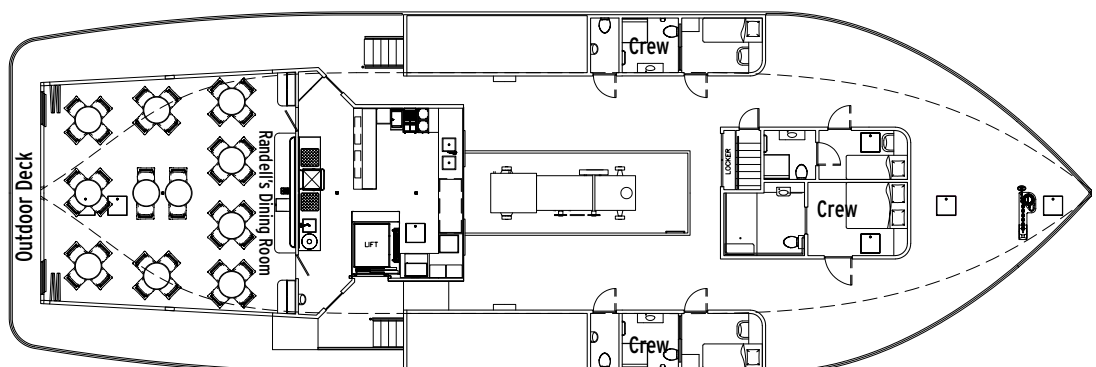
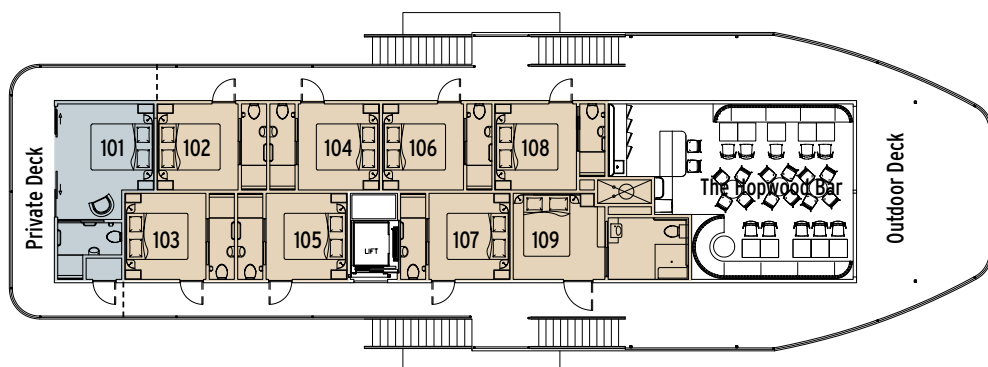
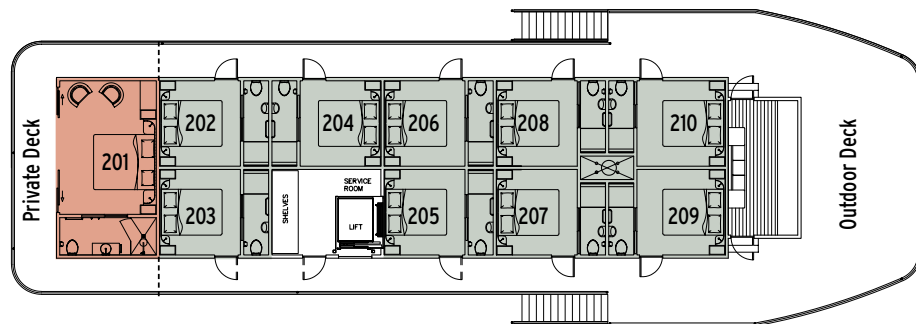
QUEEN SUITE 14.3 M² | With private deck



QUEEN STATEROOM 10.2 M²



QUEEN STATEROOM 10.2 M²



A TASTE OF AUSTRALIA



RANDELL DINING ROOM

Indulge in a culinary journey fit for royalty at the Randell Dining Room aboard the PS Australian Star. Named in honour of the pioneering spirit of William Randell, the first Captain to steam into Echuca, this elegant venue sets the stage for unforgettable dining experiences.

Begin your day with a sumptuous à la carte breakfast, where an array of fresh and flavourful dishes awaits to tantalize your taste buds. From hearty classics to lighter fare, there's something to satisfy every palate as you fuel up for a day of exploration along the Murray River.

At lunchtime, the William Randell Dining Room transforms into a haven of gastronomic delights, offering an à la carte

menu that showcases the finest local produce and seasonal ingredients. Whether you're craving a refreshing salad, a hearty soup, or a tempting selection of mains and sides, our culinary team ensures that every dish is crafted with care and expertise.

As the sun sets and the stars begin to twinkle overhead, the William Randell Dining Room undergoes a magical metamorphosis into a candle-lit restaurant, setting the stage for an enchanting evening of fine dining. Immerse yourself in the romantic ambience as you savour a delectable four-course à la carte dinner, expertly prepared and beautifully presented by our talented chefs.

Indulge in a symphony of flavours as you journey through each course, accompanied by carefully curated wines selected to compliment the culinary delights on offer. From appetisers to decadent desserts, every bite is a testament to our commitment to providing an exceptional dining experience that delights the senses and leaves a lasting impression.

Whether you're celebrating a special occasion, enjoying a romantic dinner for two, or simply treating yourself to a memorable meal, the William Randell Dining Room invites you to savour the essence of luxury dining aboard the PS Australian Star.



Dining aboard PS Australian Star

Tantalising multi course meals

Bountiful continental and full breakfast options

Traditional morning and afternoon teas

Vegetarian and gluten-free menu options

Fabulous choice of local and Australian wines and beverages

Complimentary selected wine & beer with Dinner service

Free seat dining

Seasonal alfresco dining with idyllic river views

Riverside BBQ dining under the stars on all cruises with live entertainment (weather permitting)



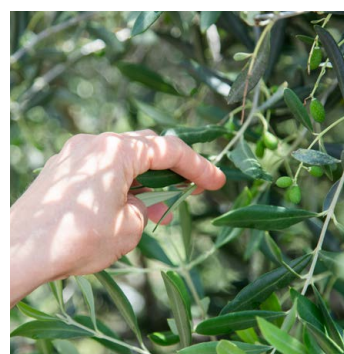
SIGHTSEEING ALL INCLUSIVE LOCAL EXPERIENCE

Explore the hidden gems of the Murray River with our unique sightseeing activities. Our onshore tours will take you to off-the-beaten-track places of historical, geographical, and cultural significance such as Perricoota Station and local wineries where you can engage in conversation with the local owners.

Experience a discovery cruise aboard the Murray Explorer and dine under the Southern constellations with our signature riverside BBQ complete with entertainment and a campfire. Our fully immersive 7-night cruise includes a Silo Arts Tour with a pub lunch at the Colbinabbin Hotel with the locals, followed by free time exploring the historic Port of Echuca.

Whether you're a history buff, in need of relaxation, or simply want to experience the beauty of the river, our cruises offer it all, leaving you feeling refreshed, recharged, and knowledgeable about the stunning Murray River region.

" The peace,
tranquility and
relaxation this unique
and very Australian
experience offers
is just magical "





3 NIGHT DISCOVERY CRUISE

Optional Rail

Start your river cruise from Melbourne - Complimentary. Return V/Line Train fares are included in your cruise fare.

Optional Echuca Car Parking

Secure undercover car parking is \$30 per night.

Departure & Arrival Times

Cruises depart every Friday, 4.00pm from Echuca.

Disembarking Monday, 9.30am at Torrumbarry.

Highlights

Unforgettable onshore tour that includes a visit to the Heritage Farm Museum

Embark on an expedition cruise aboard the Murray Explorer

Indulge in tastings of the table and fortified wines at St Anne's Winery

Explore Perricoota Station's gardens and marvel at the beauty of the filming location for the famous Australian television series, All the Rivers Run

Enjoy a memorable riverside BBQ dining experience under the stars, with live entertainment and a crackling campfire*

Take in the beauty of the Torrumbarry Weir and its surroundings

Experience all-day cruising with a historical commentary that will transport you back in time and immerse you in the rich cultural heritage of the Murray River region

Passenger lift to all decks and accommodation

Inclusions

Complimentary return V/Line train fare from Melbourne

Complimentary Echuca coach transfers to/from PS Australian Star

Luxury air-conditioned stateroom with private ensuite

All onboard meals including morning and afternoon tea

Regionally-inspired meals prepared by our head chef and onboard culinary team

Onshore Tours

Complimentary selected wine & beer with dinner service

Barista coffee, tea, soft drink & bottled water

Complimentary WIFI throughout the vessel

* Weather Permitting



Day 1. Riverside property Layfield Lane

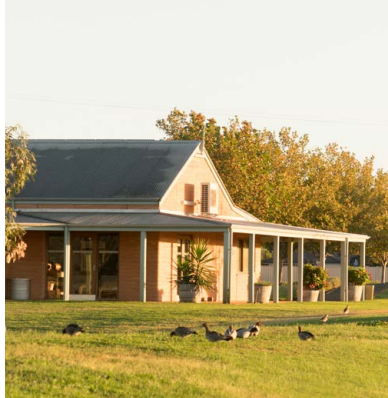
As PS Australia Star departs from Echuca, you can relax and enjoy an afternoon Devonshire tea while taking in the stunning sights and sounds of the river. You will have plenty of time to chat with the skipper and learn about the history of the vessel or simply unwind in your private Stateroom.

As the sun begins to set, Happy Hour starts, where you can enjoy a drink in the Hopwood Lounge and Bar before arriving at Layfield Lane for a grand dinner on the riverbank. The signature Australian BBQ, lit by candles and stars, sets the perfect mood for an evening of casual conversation and live entertainment around the campfire.*

Day 2. Deep Creek Marina

Experience the perfect start to your day with a delightful breakfast before embarking on a captivating half-day land and river tour that promises to be an unforgettable journey. Your adventure begins with a visit to the fascinating Heritage Farm Museum, where you'll immerse yourself in the charm of the past.

Next, get ready to be enchanted as you join the Murray Explorer, that will take you on an Expedition cruise along the upper Murray River. Prepare to be awestruck by the natural wonders that surround you, from breathtaking landscapes to a rich array of wildlife. Keep your eyes peeled for White Faced Herons and you may even find a King Fisher, all this along with a captains commentary.



Later, you will visit St Anne's Winery for a tasting of their fabulous table and fortified wines before returning to PS Australian Star for lunch as you continue downriver towards Deep Creek Marina. In the evening, you can unwind with a fascinating documentary featuring archival footage of the paddlesteamers and communities of the Murray River.

Day 3. Perricoota Station & Torrumbarry Weir

Today, PS Australian Star embarks on an exhilarating full-day cruise bound for Torrumbarry Weir, promising an enriching journey filled with exploration and scenic delights.

Amidst this captivating cruise, a mid-morning interlude beckons at the renowned Perricoota Station. Join the skipper for an immersive walking tour enveloped by the rich historical tapestry of Perricoota Station's heritage.

Continuing the voyage towards Torrumbarry Weir, anticipation mounts for the forthcoming discoveries. Upon reaching the weir's shores, partake in a guided walk, traversing the structure and delving into its history and significance. Explore the Interpretive Centre, a treasure trove of knowledge illuminating the intricate details of the Murray Darling Basin and the ingenious weir and lock system, which traces its origins back to 1923.

As the day gracefully transitions into evening, prepare for a splendid conclusion to this memorable journey. Indulge in a delectable final dinner hosted by your Captain, commencing with tantalising pre-dinner canapés and refreshing drinks against the backdrop of the setting sun casting its golden hues over the tranquil weir. As the stars emerge in the night sky, casting their celestial glow, savour every moment of this serene and magical evening aboard the PS Australian Star.

Day 4. Echuca

This morning, early risers can enjoy a riverside stroll before breakfast. A courtesy coach will then be ready to return you to Echuca, where you will reluctantly say farewell to your unforgettable river journey on the PS Australian Star.



FROM \$2,403 PER PERSON TWIN SHARE
Book now with just \$400 pp

| Month | Queen Stateroom | Queen Suite | King Suite |
|-------|-----------------|-------------|------------|
| 2025 | | | |
| Oct | \$2,670 | \$3,300 | \$3,750 |
| Nov | \$2,670 | \$3,300 | \$3,750 |
| Dec | \$2,670 | \$3,300 | \$3,750 |
| 2026 | | | |
| Jan | \$2,670 | \$3,300 | \$3,750 |
| Feb | \$2,670 | \$3,300 | \$3,750 |
| Mar | \$2,670 | \$3,300 | \$3,750 |
| April | \$2,670 | \$3,300 | \$3,750 |
| May | \$2,670 | \$3,300 | \$3,750 |
| Jun | \$2,403 | \$2,970 | \$3,375 |
| Jul | \$2,403 | \$3,300 | \$3,750 |
| Aug | \$2,403 | \$3,300 | \$3,750 |
| Sept | \$2,670 | \$3,300 | \$3,750 |
| Oct | \$2,670 | \$3,300 | \$3,750 |
| Nov | \$2,670 | \$3,300 | \$3,750 |
| Dec | \$2,670 | \$3,300 | \$3,750 |

All fares are in AUD.

Coach Transfers: Your fare includes complimentary coach transfers from our Echuca Car Park/Train Station to PS Australian Star at the beginning and end of your cruise. Same day.



4 NIGHT EXPLORER CRUISE

Optional Rail

Start your river cruise from Melbourne - Complimentary. Return V/Line Train fares are included in your cruise fare.

Optional Echuca Car Parking

Secure undercover car parking is \$30 per night.

Departure & Arrival Times

Cruises depart every Monday, 4.00pm from Torrumbarry. Disembarking Friday, 9.30am at Echuca.

Highlights

Owner led Guided tour of Murray Gums Estate featuring Olive and Wine tastings with a gourmet lunch

Explore Perricoota Station's gardens and marvel at the beauty of the filming location for the famous Australian television series, All the Rivers Run

Enjoy a memorable riverside BBQ dining experience under the stars, with live entertainment and a crackling campfire.*

Take in the beauty of the Torrumbarry Weir and its surroundings

Enjoy a narrated coach tour of Echuca's historic sites with free time to explore Echuca

Embark on a 1 hour cruise aboard the century old PS Canberra with morning tea

All-day cruising with historical commentary

Passenger lift to all decks and accommodation

Inclusions

Return V/Line Train Fares from Melbourne to Echuca

Luxury air-conditioned stateroom with private ensuite

All meals including morning and afternoon tea

Chef prepared Regionally-inspired meals

Onshore Tours

Selected wine & beer with dinner service

Barista coffee, tea, soft drink & bottled water

Complimentary WIFI throughout the vessel

Complimentary transfers from Torrumbarry Weir to Echuca and Car Parking

* Weather Permitting

Day 1. Norris Bend

As you depart Torrumbarry upstream, enjoy an afternoon Devonshire tea, take in the sights and sounds of the river and get to know your fellow cruisers. There's ample time to chat with the skipper in the wheelhouse to learn about PS Australian Star, river history or simply relax in your private Stateroom. When the sun begins to set, this marks the start of 'Happy Hour'. Enjoy a drink in the Hopwood Lounge and Bar before a chef-prepared welcome dinner. Listen to the river birds' evening chorus and watch for kangaroos, wombats, and many species of birds as the stars begin to appear. Tonight, we moor at Norris Bend where your crew will have a riverside campfire (weather dependant) ready for you to enjoy after dinner.

Day 2. Perricoota Station

After a hearty breakfast, PS Australian Star cruises to the famous Perricoota Station, the property first settled by James Maiden in 1843, and famous for starring in the TV mini series "All the Rivers Run" where our smaller paddlesteamer, PS Emmylou was renamed PS Providence for the movie. Here you will depart to Murray Gums Estate, producers of fine wines and olives before a gourmet lunch of local produce and wine tastings.

Arriving at Perricoota Station the Captain will invite you to walk along the historical buildings and immaculate gardens of Perricoota Station before happy hour. Tonight enjoy a fabulous dinner on the deck of PS Australian Star overlooking the famous Perricoota Station. After dinner it's Movie Night with a special presentation of "Riverboats Remembered", a fabulous historical presentation featuring archival footage of the paddle steamers and communities of the Murray River from the early 1900s through to the mid-1970s.



Day 3. River Cruising & Layfield Lane

For early risers and keen photographers, the morning mist and wildlife around Perricoota is a sight to behold. After breakfast, PS Australian Star gracefully steams onwards upstream for a full day of cruising towards our riverside mooring, Layfield Lane. Today enjoy lunch in the Randell Dining Room, with plenty of time to relax with a good book or just take in the river views. Tonight, enjoy a grand dinner on the riverbank - our signature Australian BBQ,* lit up by candles on the tables and stars in the sky. After dinner enjoy casual conversation around the campfire* with live entertainment and poetry recitals before retiring for the evening.

Day 4. Town Tour & Echuca

Start your day with a satisfying breakfast to fuel up for an exciting half-day adventure on both land and water. Your guided Henry Hopwood Town Tour tour will take you through the charming town of Echuca, uncovering hidden historical gems like Hopwood's Punt and the pontoon bridge. This bridge, the brainchild of Echuca's founder Henry Hopwood, marks the initial river crossing in the area.

Next, prepare to be enchanted by our century old PS Canberra featuring a red gum timber hull built in 1912 at Goolwa South Australia. Enjoy morning tea aboard before returning to PS Australian Star for lunch when your river cruise adventure continues upstream, cruising past the imposing Port of Echuca Wharf once home to over 100 paddlesteamers in its heyday. This evening you will enjoy a farewell dinner cruising upriver of Echuca.

Day 5. Echuca

This morning before breakfast early risers can enjoy a riverside stroll before we reluctantly say farewell.

* Weather Permitting



FROM \$3,204 PER PERSON TWIN SHARE
Book now with just \$400 pp

| Month | Queen Stateroom | Queen Suite | King Suite |
|-------|-----------------|-------------|------------|
| 2025 | | | |
| Oct | \$3,560 | \$4,400 | \$5,000 |
| Nov | \$3,560 | \$4,400 | \$5,000 |
| Dec | \$3,560 | \$4,400 | \$5,000 |
| 2026 | | | |
| Jan | \$3,560 | \$4,400 | \$5,000 |
| Feb | \$3,560 | \$4,400 | \$5,000 |
| Mar | \$3,560 | \$4,400 | \$5,000 |
| April | \$3,560 | \$4,400 | \$5,000 |
| May | \$3,560 | \$4,400 | \$5,000 |
| Jun | \$3,204 | \$3,960 | \$4,500 |
| Jul | \$3,204 | \$3,960 | \$4,500 |
| Aug | \$3,204 | \$3,960 | \$4,500 |
| Sept | \$3,560 | \$4,400 | \$5,000 |
| Oct | \$3,560 | \$4,400 | \$5,000 |
| Nov | \$3,560 | \$4,400 | \$5,000 |
| Dec | \$3,560 | \$4,400 | \$5,000 |

All fares are in AUD.

Coach Transfers: Your fare includes complimentary coach transfers from our Echuca Car Park/Train Station to PS Australian Star at the beginning and end of your cruise. Same day.



7 NIGHT ALL THE RIVERS RUN CRUISE

Optional Rail

Start your river cruise from Melbourne - Complimentary. Return V/Line Train fares are included in your cruise fare.

Optional Echuca Car Parking

Secure undercover car parking is \$30 per night.

Departure & Arrival Times

Cruises depart every Monday, 4.00pm from Torrumbarry.

Disembarking Following Monday, 9.30am at Torrumbarry

Highlights

Owner led Guided tour of Murray Gums Estate featuring Olive and Wine tastings with a gourmet lunch

Indulge in tastings of the fabulous table and fortified wines at St Anne's Winery

Learn about the rich local history on a town tour of historical Echuca sites plus enjoy a river cruise aboard the century old PS Canberra with morning tea

Visit a Heritage Farm Museum on an unforgettable onshore tour

Enjoy a regional Silo Arts Tour and have lunch at the Colbinabbin Pub

Embark on an expedition cruise aboard the Murray Explorer

Explore Perricoota Station's gardens and marvel at the beauty of the filming location for the famous Australian television series, All the Rivers Run

Enjoy a memorable riverside BBQ's dining experience under the stars, with live entertainment and a crackling campfire.*

Take in the stunning beauty of the Torrumbarry Weir and its surroundings

Experience all-day cruising with a historical commentary that will transport you back in time and immerse you in the rich cultural heritage of the Murray River region

Passenger lift to all decks and accommodation

Inclusions

Complimentary return V/Line train fare from Melbourne

Complimentary transfer to/from PS Australian Star

Luxury air-conditioned stateroom with private ensuite

All onboard meals including morning & afternoon tea

Four Onshore tours

Regionally-inspired meals prepared by our head chef and onboard culinary team

Complimentary selected wine & beer with dinner service

Barista coffee, tea, soft drink & bottled water

Complimentary WIFI throughout the vessel

* Weather Permitting



Day 1. Norris Bend

As PS Australian Star departs Torrumbarry, have the opportunity to indulge in an afternoon Devonshire tea while taking in the scenic views and getting to know your fellow cruisers. You can chat with the Captain in the wheelhouse and learn about the river history or unwind in your private Stateroom or the Hopwood Lounge and Bar during "Happy Hour" as the sun sets.

In the evening, the crew will set up a riverside campfire (subject to weather) for you to enjoy after a welcome dinner at Norris Bend, prepared by the chef. You can also look out for kangaroos, wombats, and birds while taking in the evening chorus of the river birds and the emerging stars.

Day 2. Perricoota Station

Enjoy a hearty breakfast before cruising to the famous Perricoota Station. You'll have the chance to board our coach for a visit to Murray Gums Estate with the property's owners, and enjoy a gourmet lunch of local produce and wine tastings.

You can then explore the historical buildings and immaculate gardens of Perricoota Station before having dinner on PS Australian Star's deck overlooking Perricoota Station.

The night will conclude with a fascinating documentary featuring archival footage of the paddlesteamers and communities of the Murray River.

Day 3. Layfield Lane

For early risers and avid photographers, the morning mist and wildlife around Perricoota is a spectacle to behold. You'll then spend the whole day cruising upstream towards Layfield Lane, enjoying lunch on the deck or in the Randell Dining Room.

In the evening, you can experience a grand dinner on the riverbank with the signature Australian BBQ, followed by live entertainment and casual conversation around the campfire (weather dependent).

Day 4. Town Tour & Echuca

Begin your day with a hearty breakfast to prepare for an exhilarating half-day expedition encompassing both land and water. Embark on our unique guided Henry Hopwood Town Tour, a captivating journey through the quaint town of Echuca, where you'll unearth hidden historical treasures such as Hopwood's Punt and the pontoon bridge. This bridge, conceptualized by Echuca's founder, Henry Hopwood, stands as the original river crossing point in the region.

Prepare to be captivated by the century old PS Canberra, boasting a red gum timber hull constructed in 1912 at Goolwa, South Australia. Indulge in morning tea aboard this vessel before returning to PS Australian Star for lunch. Your river cruise adventure continues upstream, passing by the impressive Port of Echuca Wharf, which was once bustling with over 100 paddle steamers during its prime.

Day 5. Silo Tour & Layfield Lane

Prepare yourself for an engaging half-day expedition that will immerse you in the beauty of local artistry and historical vignettes. The day kicks off with a visit to the breathtaking local art silos situated at Rochester and Colbinabbin. These larger-than-life paintings are a testament to the region's rich heritage and are sure to leave an indelible impression.

Your excursion doesn't just end with the visual feast of the silos; it extends to a delightful lunch at a renowned local pub. Here, you'll not only savour delicious fare but also have the unique opportunity to interact with the pub's welcoming owners and engage in lively conversations with the friendly locals.

As you reboard the PS Australian Star, get ready to unwind during the afternoon cruise downstream with a relaxing Devonshire tea. The serene ambience of the river compliments the delectable treats served, providing a perfect backdrop for a leisurely afternoon. As the sun starts to set savour a refreshing drink in the ship's Hopwood Lounge and Bar while basking in the scenic beauty surrounding you.

As twilight sets in, a magical experience awaits you at Layfield Lane. Following a sumptuous Australian BBQ dinner served on the riverbank the atmosphere transforms with live entertainment around a crackling campfire under the sparkling stars.*

Day 6. Deep Creek Marina

Today you will experience the perfect start to your day with a delightful breakfast before embarking on a captivating half-day land and river tour that promises to be an unforgettable journey. Your adventure begins with a visit to the fascinating Heritage Farm Museum, where you'll immerse yourself in the charm of the past.

Next, get ready to be enchanted as you join the Murray Explorer, that will take you on an Expedition cruise along the upper Murray River. Prepare to be awestruck by the natural wonders that surround you, from breathtaking landscapes to a rich array of wildlife. Keep your eyes peeled for White Faced Herons and you may even find a Kingfisher, all this along with a captain's commentary.

On your return to PS Australian Star we visit St Anne's Winery for tasting of their fabulous table and fortified wines before returning to PS Australian Star for an afternoon tea service as you continue downstream towards Deep Creek Marina.

* Weather Permitting



Day 7. Torrumbarry Weir

PS Australia Star departs early for a full day of cruising with a stop at the famous Perricoota Station before continuing downriver towards Torrumbarry Weir. Upon arrival, you can take a guided walk across the weir with the Skipper, visiting the Interpretive Centre and learning about the Murray Darling Basin, the weir, and the lock system that dates back to 1923. Tonight, enjoy a delicious final dinner hosted by your Skipper with pre-dinner canapes and drinks as the sun settles over the weir. Listen to the river birds' evening chorus and watch for kangaroos, wombats, and various bird species as the stars begin to appear during dinner.

Day 8. Echuca

Early risers can enjoy a riverside stroll before breakfast. A courtesy vehicle will then be ready to return you to Echuca, where you will reluctantly say farewell to your unforgettable river journey on the PS Australian Star.

FROM \$5,652 PER PERSON TWIN SHARE
Book now with just \$400 pp

| Month | Queen Stateroom | Queen Suite | King Suite |
|-------|-----------------|-------------|------------|
| 2025 | | | |
| Oct | \$6,280 | \$7,700 | \$8,750 |
| Nov | \$6,280 | \$7,700 | \$8,750 |
| Dec | \$6,280 | \$7,700 | \$8,750 |
| 2026 | | | |
| Jan | \$6,280 | \$7,700 | \$8,750 |
| Feb | \$6,280 | \$7,700 | \$8,750 |
| Mar | \$6,280 | \$7,700 | \$8,750 |
| April | \$6,280 | \$7,700 | \$8,750 |
| May | \$6,280 | \$7,700 | \$8,750 |
| Jun | \$5,652 | \$6,930 | \$7,875 |
| Jul | \$5,652 | \$6,930 | \$7,875 |
| Aug | \$5,652 | \$6,930 | \$7,875 |
| Sept | \$6,280 | \$7,700 | \$8,750 |
| Oct | \$6,280 | \$7,700 | \$8,750 |
| Nov | \$6,280 | \$7,700 | \$8,750 |
| Dec | \$6,280 | \$7,700 | \$8,750 |

All fares are in AUD.
Coach Transfers: Your fare includes complimentary coach transfers from our Echuca Car Park/Train Station to PS Australian Star at the beginning and end of your cruise. Same day.

SPECIAL OFFERS



Book with FRIENDS

Save **\$300** per couple

Gather some friends and save \$150 per person or \$300 per couple. Available when six or more guests' book twin share at the same time and travel on the same cruise. Combinable with 10% off peak offer.

SAVE 10%

Save **\$10%**

With over 90% of winter days bright and sunny experience the beauty of the Murray during June, July and August.

SOLO Travellers

Save big when cruising **off-peak**

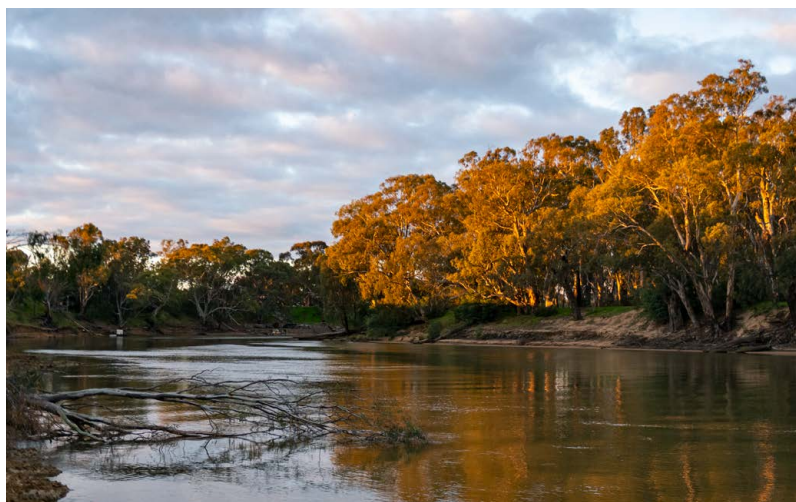
Cruise Solo during June, July & August and pay just 40% Solo Surcharge for your own Stateroom. That's 35% off the standard 75% Surcharge charged during Peak periods.



Deposit Protection

We're excited to introduce our Deposit Protection Program designed for peace of mind and flexible planning. For just \$120 per person, you now have the freedom to transfer your deposit to another cruise departing within 12 months if plans change. This means you can book with confidence, knowing that your deposit is protected and your dream river journey is as flexible as your schedule. Whether you're ready to cruise now or need to adjust, we've made it easy to enjoy the magic of the Murray River when it's best for you.

Terms and conditions apply.



EXTEND YOUR STAY



HOTELS

Echuca Moama is a destination in its own right and truly worth exploring. Staying a day or two before boarding your cruise, or after you return to dock, is a great way to immerse yourself in regional Australia. We're delighted to partner with an award-winning hotel in Echuca conveniently located close to the port and several Melbourne hotels for those travelling further afield. Pre and post-cruise accommodation can be booked directly through Murray River Paddle Steamers.

Echuca Undercover Car Parking

Secure undercover parking is available for cruise passengers' cars at a rate of \$30 per day. Prior reservation is required. Please contact us if you have a larger vehicle.



Mercure Port of Echuca Hotel

Superior King Room \$195 per night

Extend your experience in Echuca with a pre or post-cruise stay at the Mercure Port of Echuca Hotel. Located in the centre of town, within walking distance to the port and High Street shops, our exclusive rate offers you a Deluxe Room featuring a king bed, plasma TV and DVD player, exquisite bathroom, pay-TV and wireless internet access.



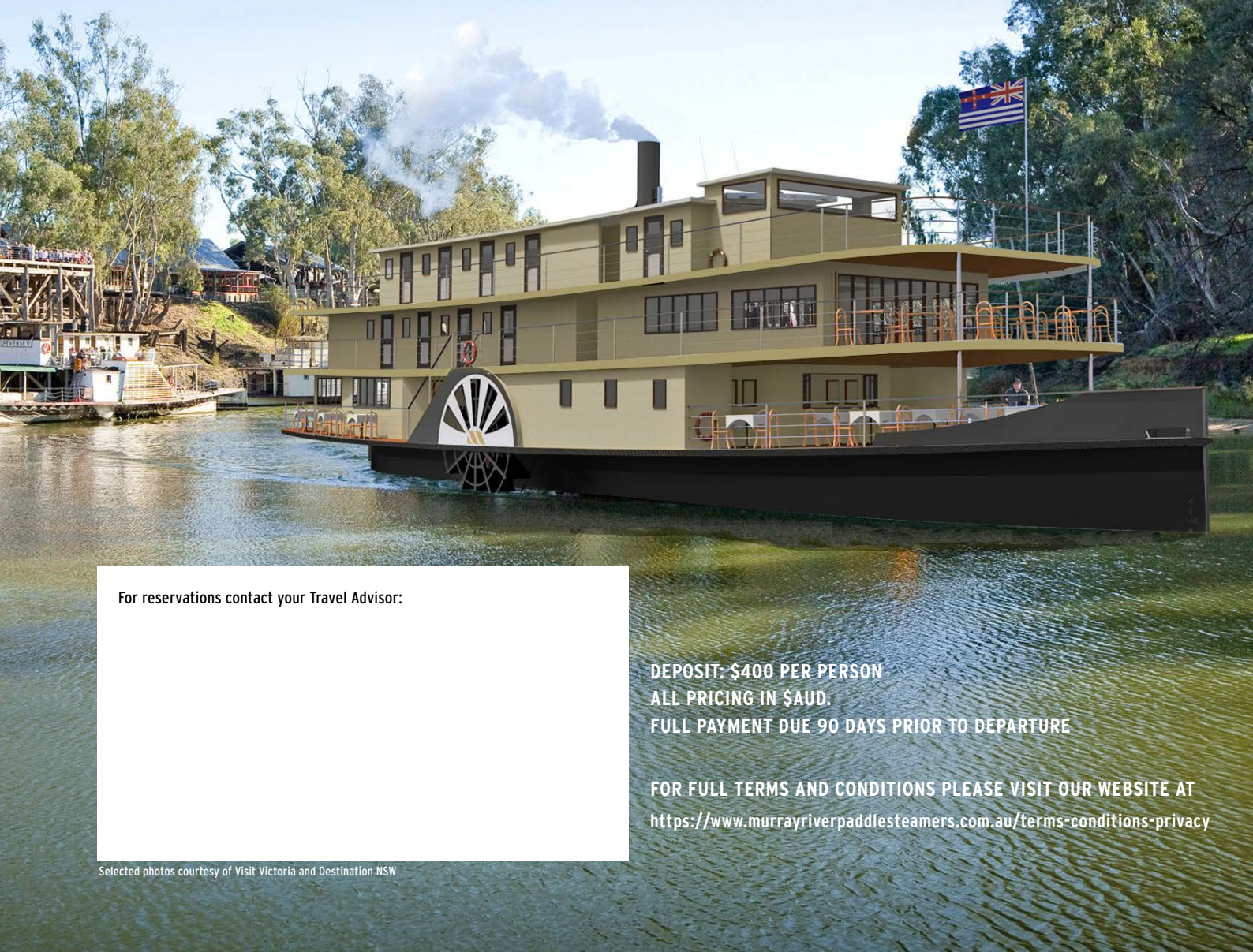
REQUEST MORE INFORMATION

57 Murray Esp, Echuca, VIC 3564

CALL 03 5482 5244

EMAIL info@mrps.com.au

VISIT mrps.com.au



For reservations contact your Travel Advisor:

**DEPOSIT: \$400 PER PERSON
ALL PRICING IN \$AUD.
FULL PAYMENT DUE 90 DAYS PRIOR TO DEPARTURE**

**FOR FULL TERMS AND CONDITIONS PLEASE VISIT OUR WEBSITE AT
<https://www.murrayriverpaddlesteamers.com.au/terms-conditions-privacy>**